

# FREE Thailand Snakes Ebook – Get Yours!

## PHOTOS OF COMMON THAILAND SNAKES – Venomous and Non-venomous

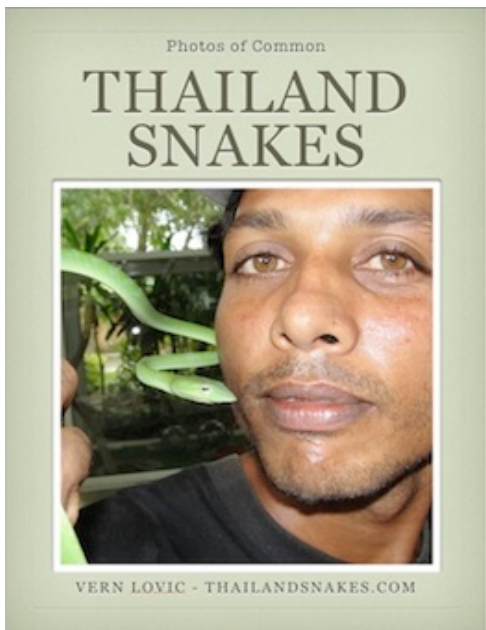
This is Our [FREE ebook](#) with 83 pages, you can get today.

[CLICK HERE](#) TO GET IT.

(This page last Updated: 14 February 2017)

### *Photos of Common Thailand Snakes*

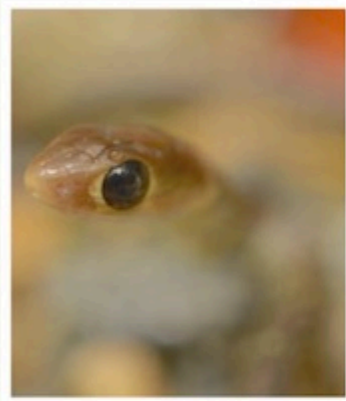
[ click book cover to get your copy now]



Free Ebook – just for signing up for free newsletter.

**Some Inside Pages:**

# RACERS AND RAT SNAKES



Rat snakes are non-venomous, have no fangs, but are known to bite frequently. They do have teeth! They are diurnal (active by day) and generally inhabit trash areas, high grass, trees, caves, and thick brush. These snakes are very common, and yet you will probably not see one during your stay in Thailand.



## Characteristics

1. Not so common, active at night on the ground.
2. Grows to 140 cm. long and about 2 fingers thick at the most.
3. Strong neurotoxic venom which is potentially fatal. This snake is not known to bite much, but stay clear of it, the venom is very strong.
4. Eats other snakes primarily, and other small animals like lizards and frogs as they are found.
5. Colors - blue or black body, red head, red tail, red belly.

## • *Calliophis bivirgata* •



## Blue Malaysian Coral Snake

Another beautiful snake, and amazing photo by Tom Charlton. These are sometimes confused with the red-headed krait (*Bungarus flaviceps*), but there are marked differences in pattern, head size, thickness, body type, cross section, and belly color. Both snakes are highly venomous and deadly, but the Blue Malaysian coral snake is more common in Thailand because its range extends across the country whereas the red-

headed krait is only known to occur in Southern Thailand.

© 2014 Tom Charlton -  
EcoAnimalEncounters.co.uk.

• *Chrysopelea ornata* •

Characteristics

1. Very common, active by day or in the trees or on ground.
2. Grows up to 130 cm. and 2 fingers thick.
3. Mildly venomous, but will not affect humans. Very quick to bite.
4. Eats frogs, lizards, birds, and especially seems to have a taste for tokay geckos.
5. Colors - green and black, or yellow and black checkered pattern. If red pattern on top - it's *Chrysopelea paradisi* - a different species, but basically same snake. Photo on next page.



## Golden Tree Snake

These are very common snakes in Thailand. If you see any snake during your visit, this will probably be the one. A high portion of identification requests I get at [ThailandSnakes.com](http://ThailandSnakes.com) comes from people that saw this snake.

a hundred feet up a tree. These are probably the fastest tree climbing snakes in Thailand. Try to catch one and see!

© 2014 Vern Lovic - ThailandSnakes.com

This snake can flatten the body and glide through the air a bit. They sometimes jump from